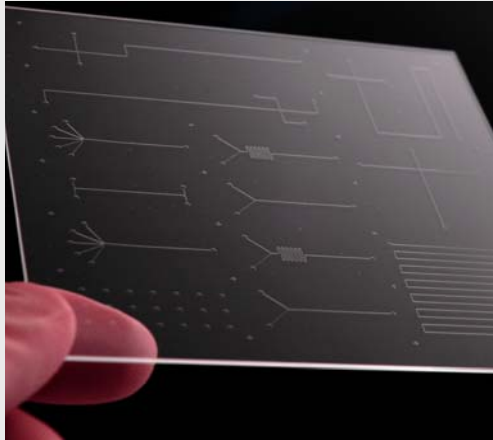


## Product Description



UltraSource Inc. is a leading manufacturer of Thin Film Circuits and related services. Since 1991, our focus has been on building a state-of-the-art thin film fabrication facility capable of creating unique circuit solutions. For the biomedical market, we offer a wide variety of chip layout and fabrication options for custom microfluidics/lab-on-a-chip products. These devices are currently being used in the most challenging biomedical applications.

Our experience includes fabrication on a variety of substrate materials. For prototype and high-volume manufacturing, our capabilities include chip design and layout services, sputtered

metallization, photolithography and etching of patterns, fluid access port through-holes, direct wafer bonding, and chip singulation.

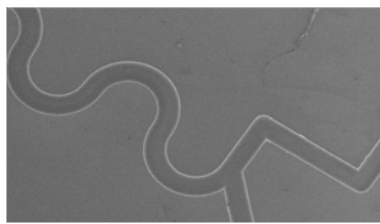
## Highlighted Capabilities

- Channel Patterning and Etching
- Fluid Access Port Processing
- Direct Wafer Bonding
- Wide Variety of Substrate Materials
- Thin Film Deposition and Photolithography
- Cleanroom Manufacturing Facility

## NEW Features

- NEW!** Collinear Chip to Capillary Interface
- NEW!** Multiple Depth Channels on Same Chip
- NEW!** Integrated Electrodes

## From Design to Production...



## UltraSource is your Lab-on-a-Chip solution.

### UltraSource, Inc.

22 Clinton Drive • Hollis, NH 03049

(800) 742-9410 • (603) 881-7799 • (603) 881-9966 FAX

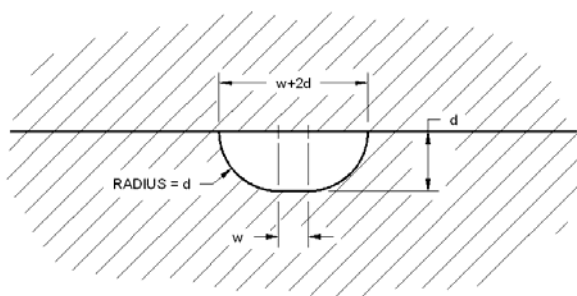
Visit us on the web at [www.ultrasource.com](http://www.ultrasource.com) • Email us at [sales@ultrasource.com](mailto:sales@ultrasource.com)

The THIN FILM Source®

## Technical Specifications

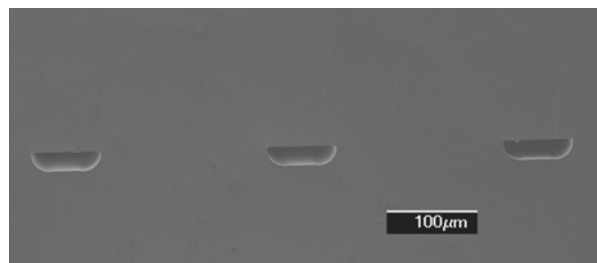
Channel Width (top)	20 to 1000 microns
Channel Depth	5 to 200 microns
Channel Cross-Section Profile	<i>See Drawing A</i>
Fluid Access Ports	10 microns to 2.0mm diameter
Channel Spacing	50 microns (minimum)
Chip Footprint	6 x 6 inches (maximum)
Chip Thickness	1.0mm to 2.2mm
Wafer Bonding Method	Direct Wafer Bonding (no intermediary layer)
Chip Materials	<ul style="list-style-type: none"> <li>◆ Borosilicate</li> <li>◆ Flat Panel Display</li> <li>◆ Fused Silica (ultralow fluorescence)</li> </ul>

**Note: These are typical specifications only. Customized specifications are our specialty.**

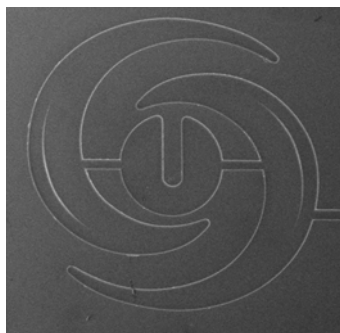


*Drawing A*

*Channel Cross-Section Profile*



*Channel Cross Section SEM*



*Etched Logo SEM*

## UltraSource, Inc.

22 Clinton Drive

Hollis, NH 03049

(800) 742-9410

(603) 881-7799

(603) 881-9966 Fax

Visit us online at [www.ultrasource.com](http://www.ultrasource.com)

Email us at [sales@ultrasource.com](mailto:sales@ultrasource.com)

**The THIN FILM Source®**